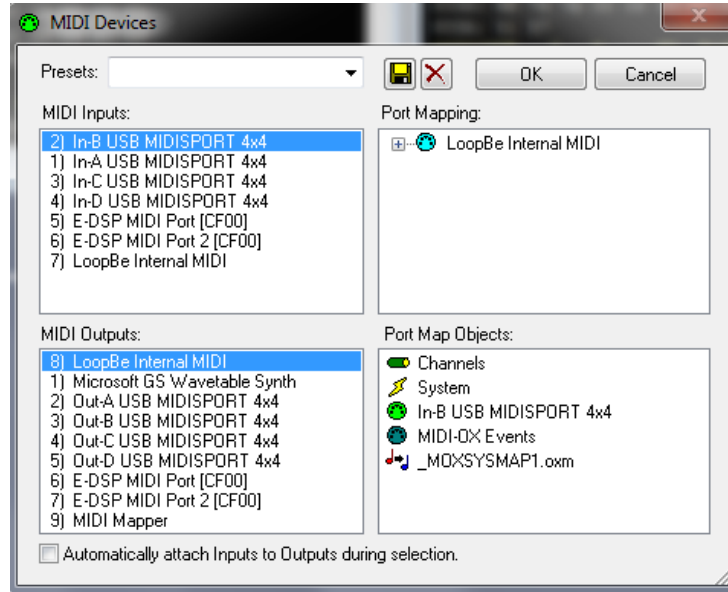


Ion-editor Setup Guide for Ableton Live

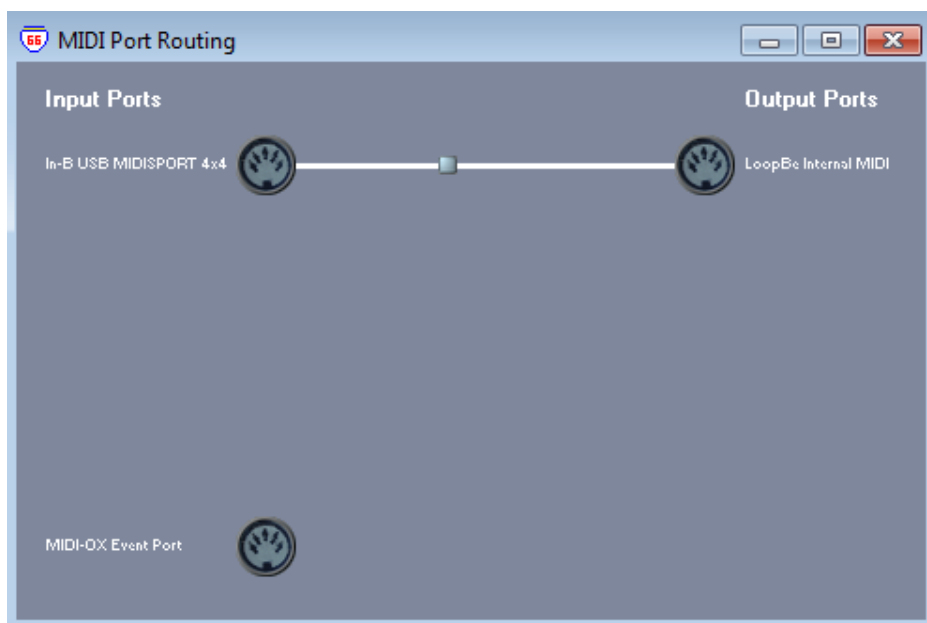
Step 1: Install loopbe1 virtual port: (<http://www.nerds.de/en/loopbe1.html>)

Step 2: Install MIDI-OX: (<http://www.midiox.com>)

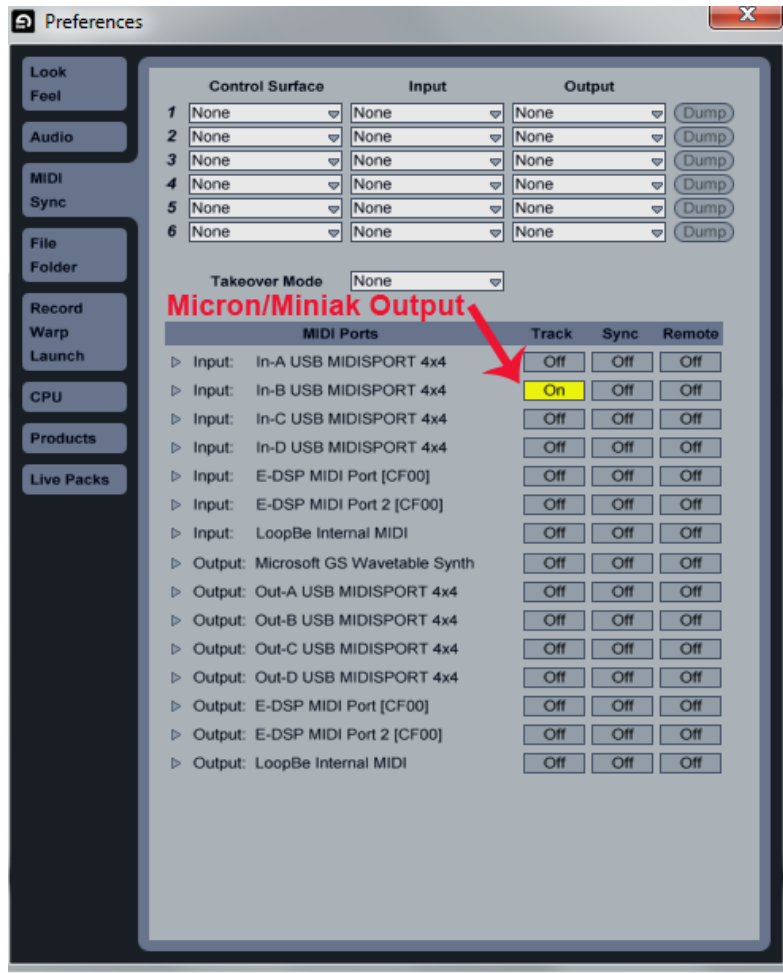
Step 3: Run MIDI-OX, go to Options>MIDI devices. Select your MIDI Input (which is connected to MIDI out of the synth) and select Loopbe1 as MIDI Output:



Step 4: Go to View>Port Routings then Connect the “MIDI In” port to loopbe1 output port with dragging:



Step 5: Run Ableton then go to Option>Preferences>(MIDI-Sync tab) and select your MIDI Input port and leave the MIDI outputs unselected:



Step 6: Select ion-editor in Ableton then 1-Set “Midi from” in Ableton track to “no input”
 2-Select Loopbe1 as Midi Input device in editor 3-Select your Midi output device in editor (which is connected to MIDI in of the synth)



Step 7: Done!



Copyright © 2006-2011 HyperSynth

www.HyperSynth.com

Email: Support@hypersynth.com